

Inspecting a Fiber with the FIP

This function is available with some models only.

To access Probe mode on your unit:

- 1 Connect probe to the right side of the unit, using an adapter if necessary.
- 2 Press Menu, and then select **Probe** to activate the probe display.

To exit Probe mode and return to the regular display:


Press Esc or press Menu and select another option.

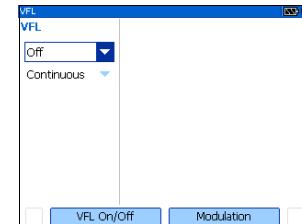
To adjust brightness or contrast:

- 1 From **Probe** pane, select **Display Settings** (F1/F2 key).
- 2 Adjust brightness and contrast. When you have finished, press **OK** (F1/F2 key).

Inspecting a Fiber with the VFL

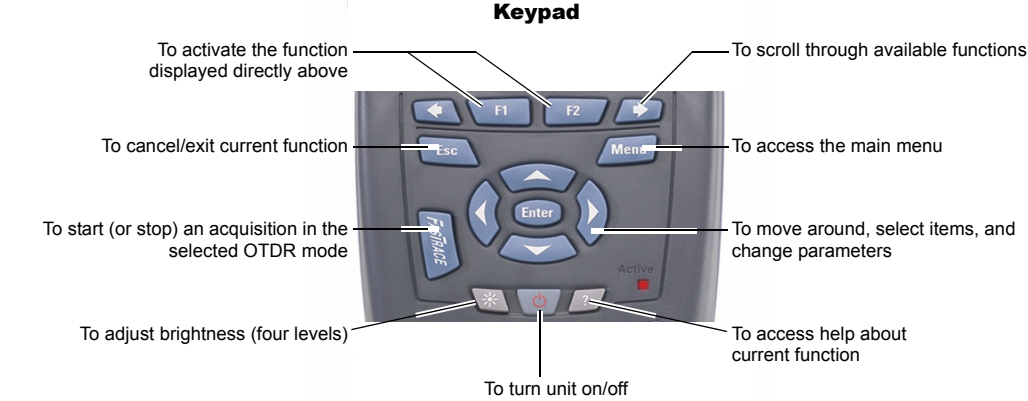
This function is only available if your unit is equipped with a VFL port.

- 1 Connect a clean fiber to the VFL port.
- 2 Press  to turn unit on.
- 3 Press Menu, and then select **VFL**.
- 4 Press **VFL On/Off** (F1/F2 key) to activate the VFL (list displays **On**).
- 5 To switch between blinking (1 Hz) and continuous (CW) signals, press **Modulation** (F1/F2 key).



- 6 *Without looking directly into the beam*, examine the fiber. If light comes out of the rubber jacket or on the side of ferrule, fiber is defective.
- 7 Press **VFL On/Off** (F1/F2 key) to deactivate the VFL.

Using the Menus and Keypad



To access main features:

- 1 Press the **Menu** key.
- 2 Use the arrows to select feature and press Enter.

To access and modify on-screen parameters:

- 1 Use the arrows to select an on-screen item (drop-down list, keyboard, check box, etc.).
- 2 Press Enter.

To activate F1/F2 functions:

- 1 Use the left/right function arrows (beside F1/F2 keys) to make the desired function or parameter visible.
- 2 Press the F1 or F2 key located just below.

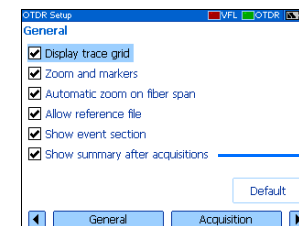
To enter text or numbers with an on-screen keyboard:

- 1 Use the left/right function arrows (beside F1/F2 keys) to move the cursor in the text.
- 2 Use the up/down and left/right arrows to select a character, and then press Enter to add it.
- 3 Press **OK** (F1/F2 key) to accept the element and hide the keyboard.

Displaying Summary Pane Automatically


This function is available with some models only.

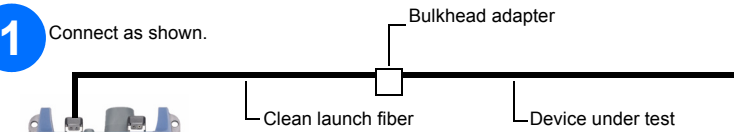
- 1 Press the Menu key to access main features.
- 2 Select **Setup > OTDR**.
- 3 Select **Show summary after acquisitions**.



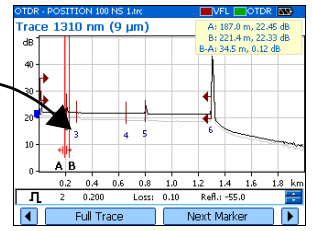
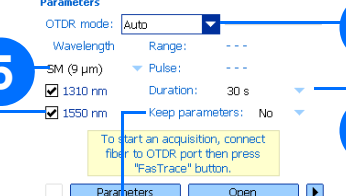
For information on how to use the keypad, see *Using the Menus and Keypad* at the back of this guide.

Testing in Auto Mode

- 1 Connect as shown.
- 2 Press  to turn unit on.
- 3 Select **Menu > OTDR > Parameters**.
- 4 Select **Auto**.
- 5 If your unit supports singlemode and multimode wavelengths, select fiber type (C fiber: 50 μ m; D fiber: 62.5 μ m).
- 6 Select test wavelengths.
- 7 Select duration of acquisition.
- 8 To reset the range and pulse for each acquisition, select **No**. To always use the same parameters, select **Yes**.
- 9 Press **FasTRACE** to start the acquisition. You can stop the acquisition at any time by pressing **FasTRACE** one more time.



OTDR Parameters



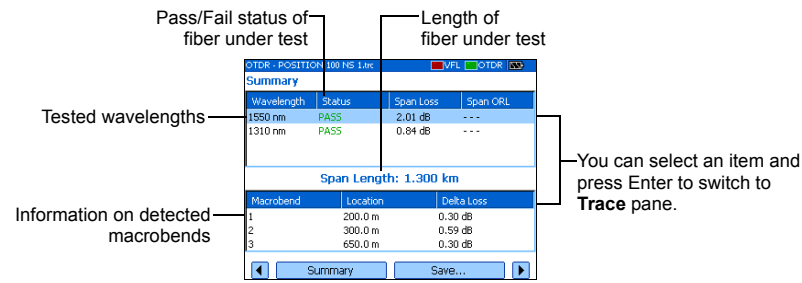
During acquisition, the trace is displayed. Once all selected wavelengths have been tested, the unit switches to **Summary** pane automatically (some models only). If not, see *Displaying Summary Pane Automatically*.



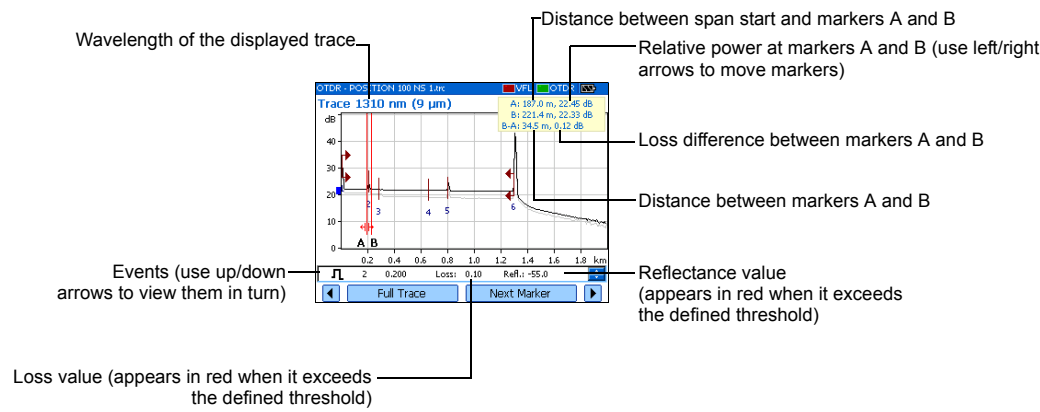
Viewing Results

There are many ways to view the results:

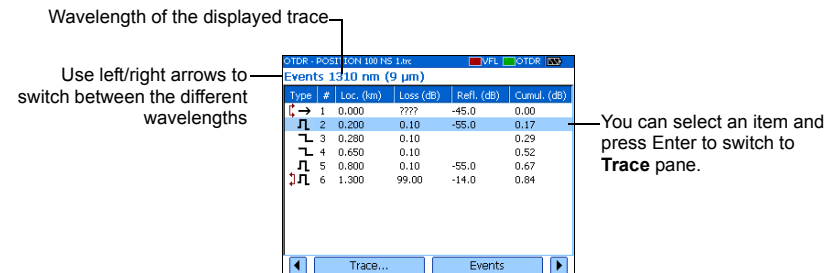
- **Summary** pane is displayed once the test is complete. You can also select **Summary** (F1/F2 keys).



- **Trace** pane. You can select **Trace** (F1/F2 keys). Zoom functions are available via **Zoom** (F1/F2 keys).

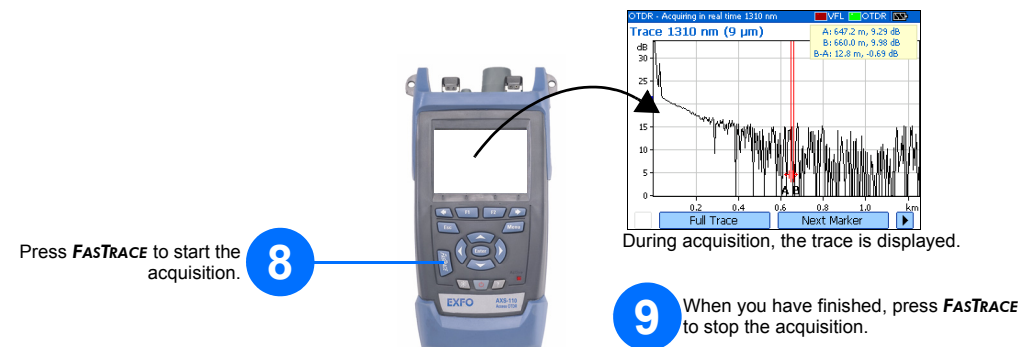
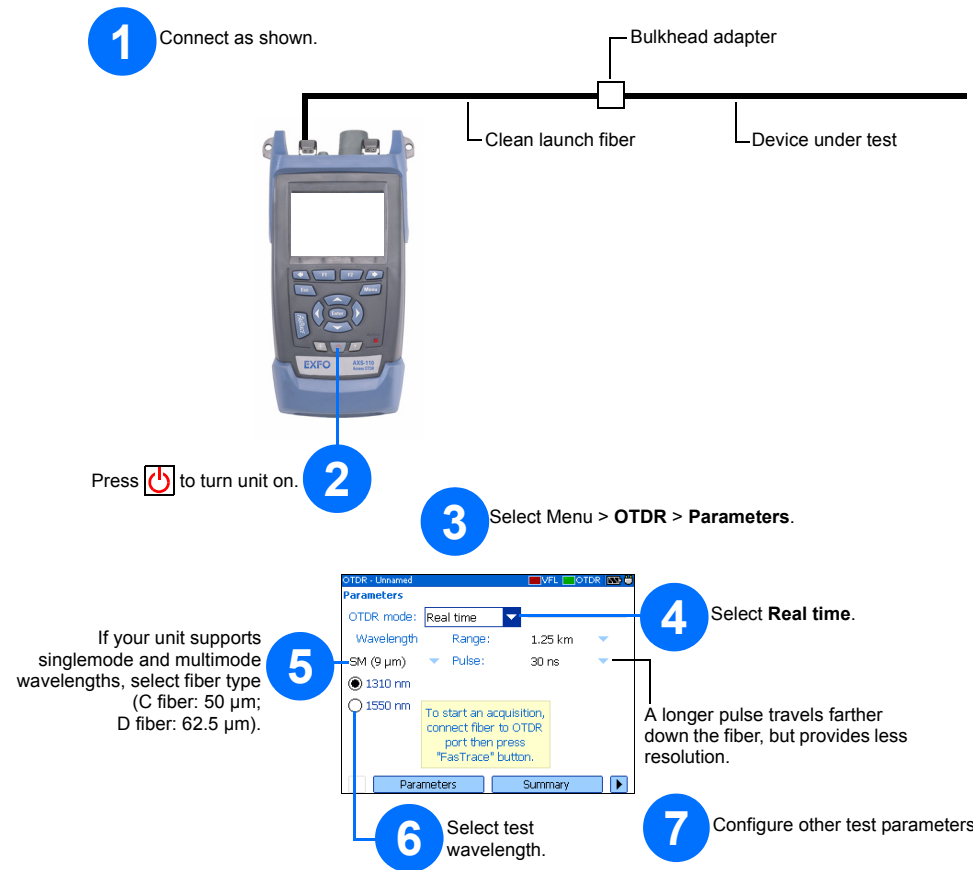


- **Events** pane. You can select **Events** (F1/F2 keys). Values appearing in red exceed the defined thresholds.

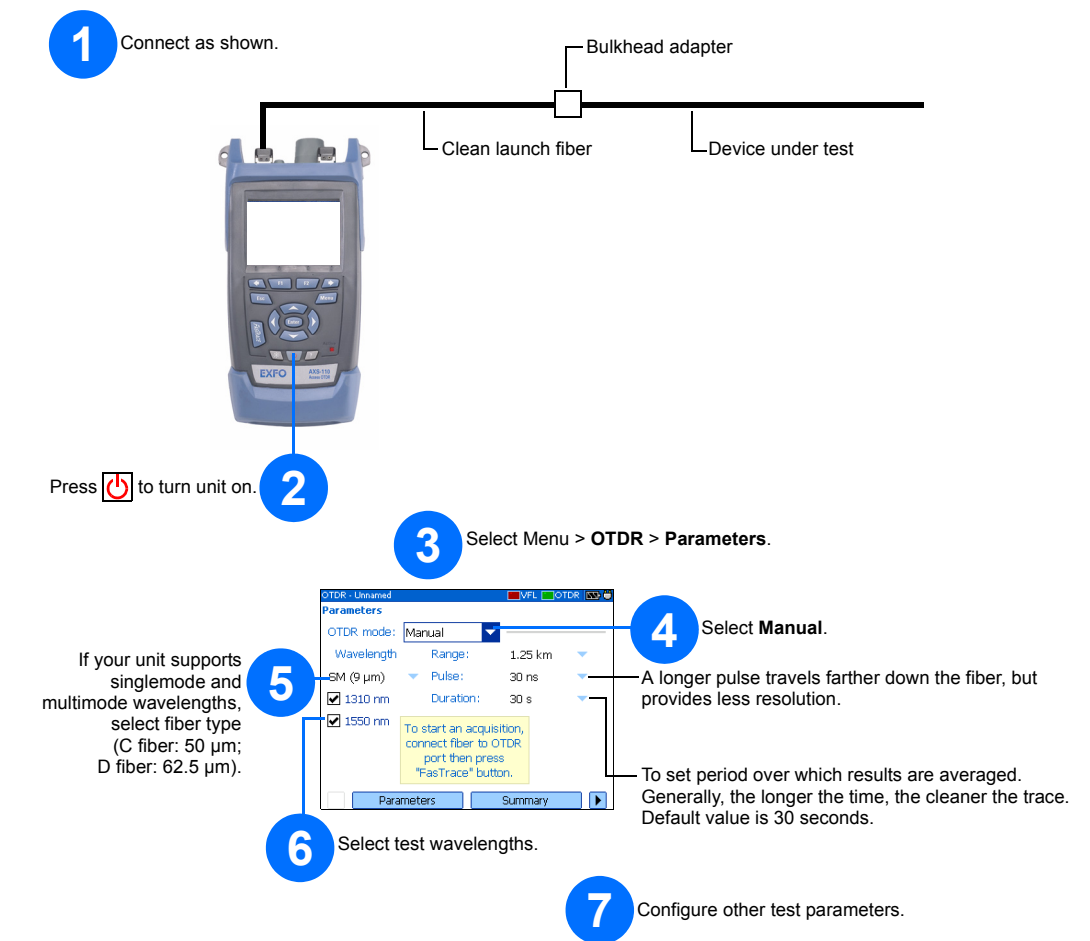


Monitoring Fiber in Real Time Mode

You can view sudden changes in the fiber link. In this mode, the trace is refreshed instead of averaged.



Testing in Manual (Advanced) Mode



- 8 Press **FASTTRACE** to start the acquisition. You can stop the acquisition at any time by pressing **FASTTRACE** one more time.
- During acquisition, the trace is displayed. Once all selected wavelengths have been tested, the unit switches to **Summary** pane automatically (some models only). If not, see *Displaying Summary pane Automatically*.

